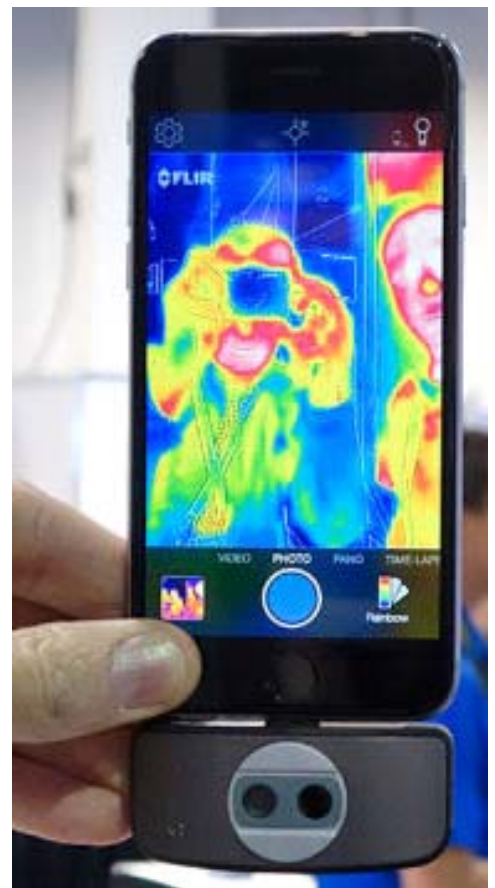


STATION 20

THERMAL IMAGING.

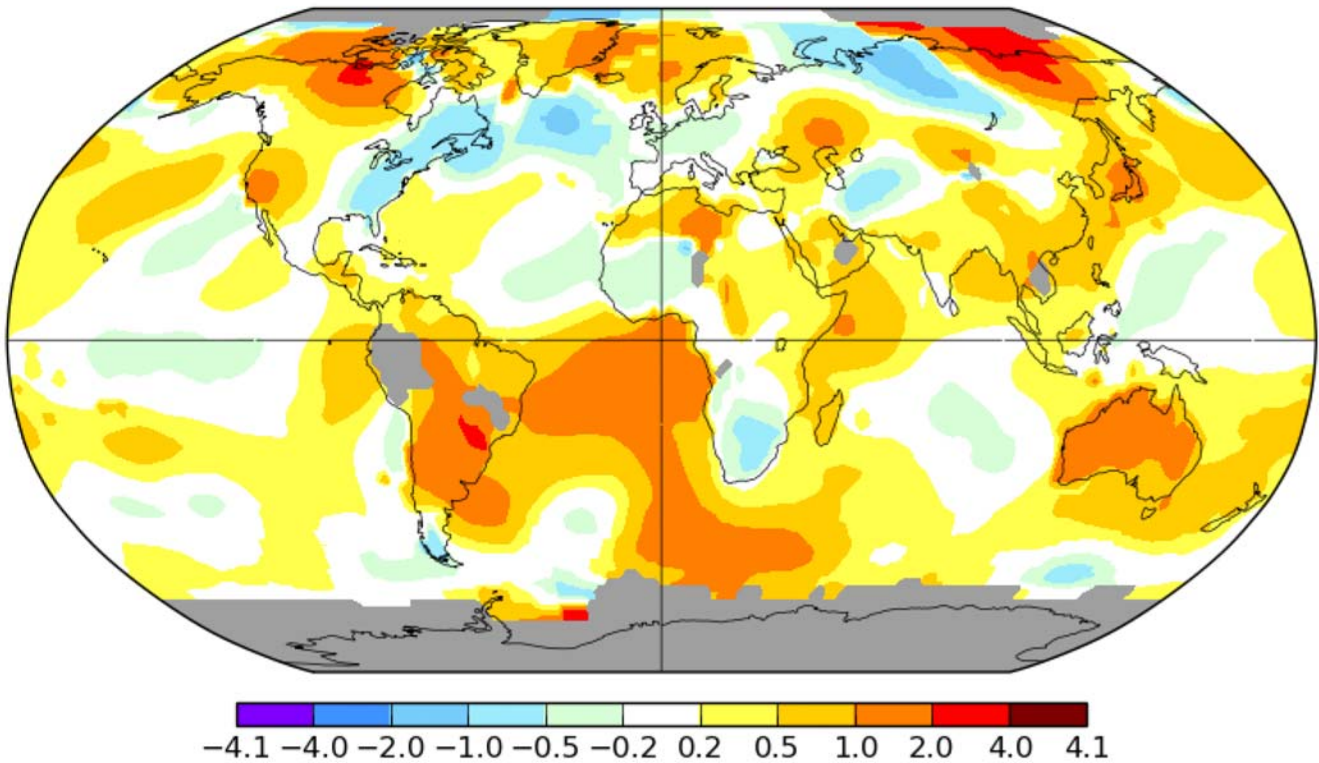
Accompanying thermal projections of the earth for four two year periods between 1972 and 2016 show that the earth is experiencing substantial warming. This is consistent with the evidence presented in Station 19.

An infrared camera is provided as part of this station that will enable you to take a thermal image of your face and upper body.

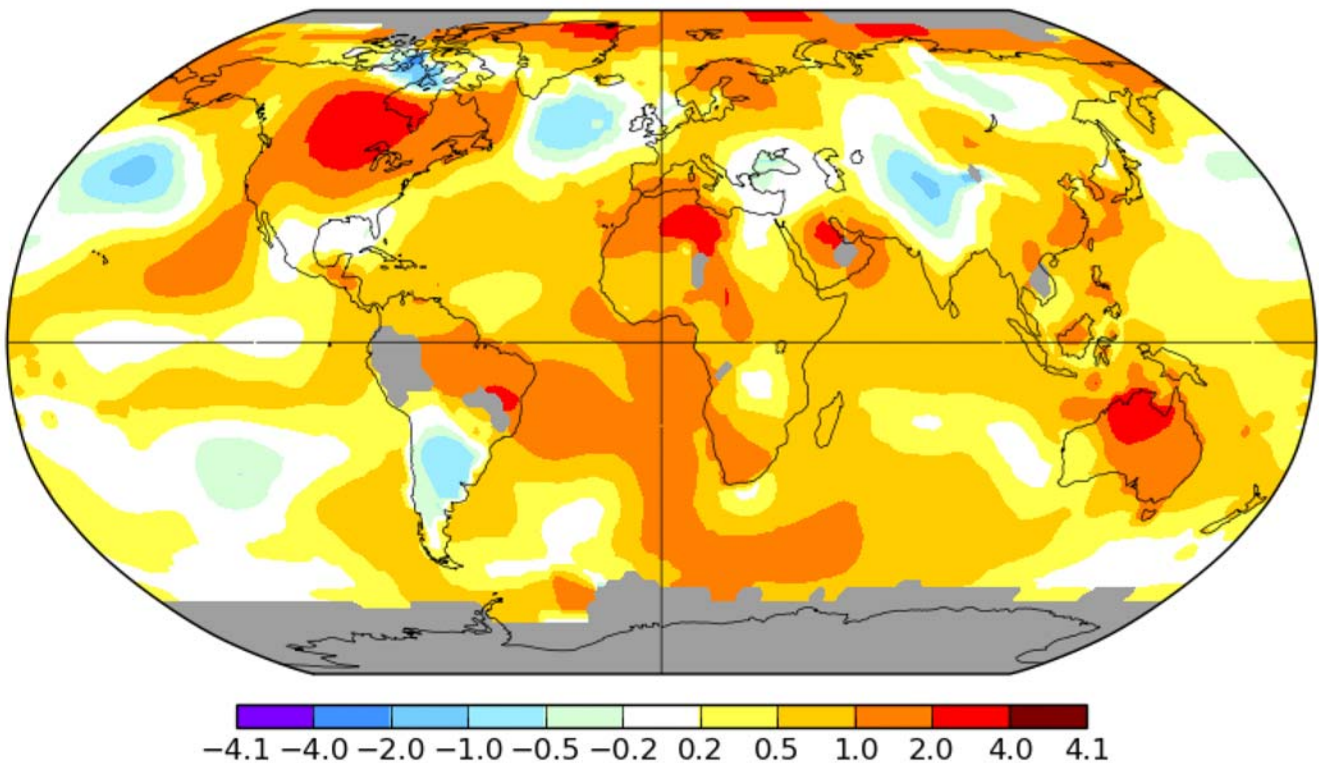


http://www.flir.com/flirone/ios-android/?pi_ad_id=102639511465&gclid=CjwKEAjlC9BRDRvMfD2N66nllSJACq8591_gBUzOSODyQZ8COYBu81vu_WY6_n-g8hNHBiX6bbSBoC5DDw_wcB

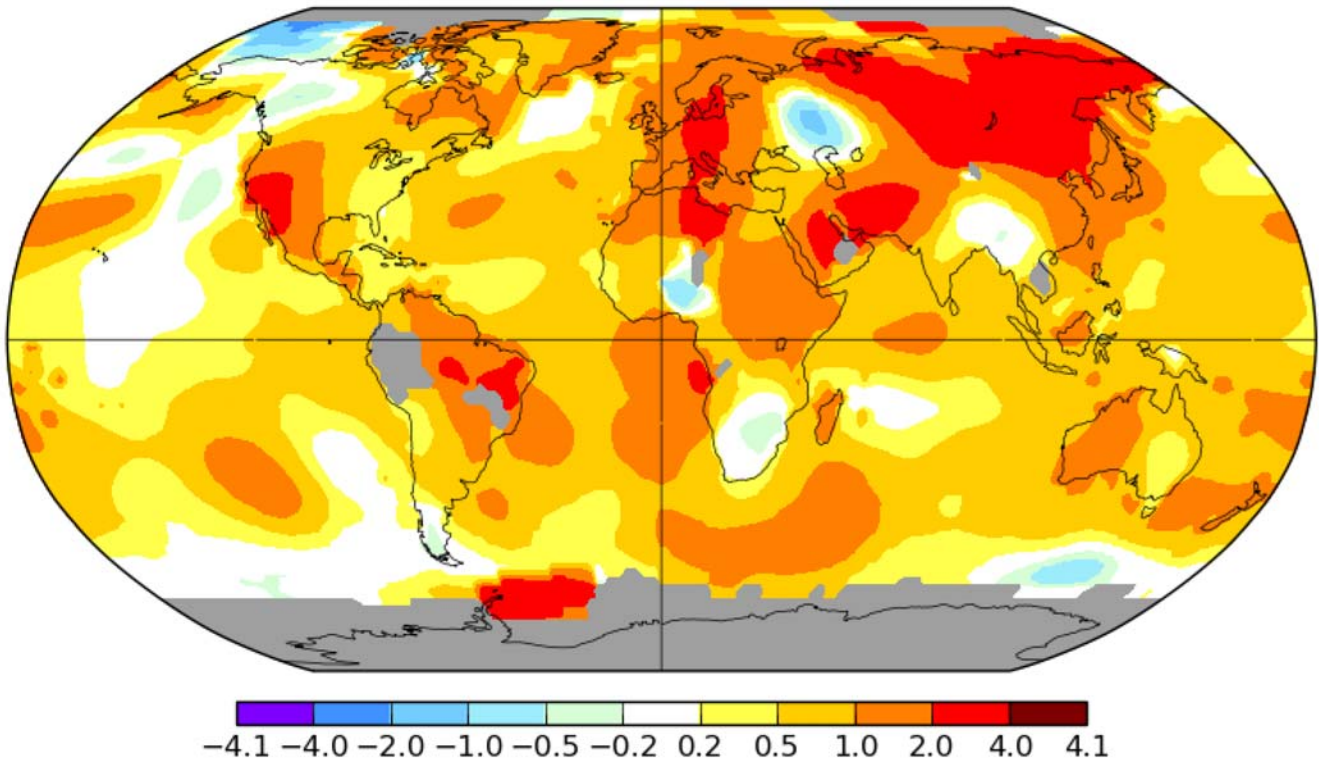
Average global temperatures from May, 1972 - 1974, compared to a baseline average for the years, 1890 - 1920.



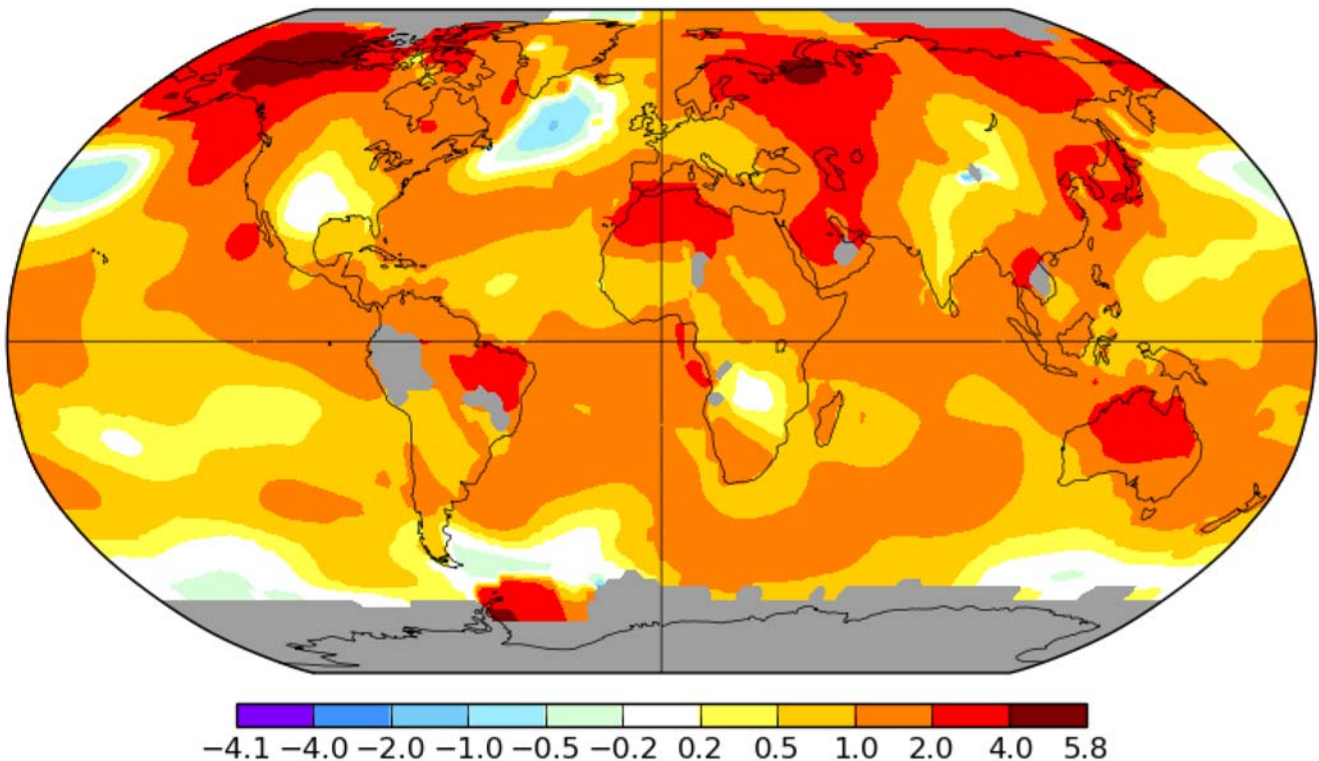
Average global temperatures from May, 1986 - 1988, compared to a baseline average for the years, 1890 - 1920.



Average global temperatures from May, 2000 - 2002, compared to a baseline average for the years, 1890 - 1920.



Average global temperatures from May, 2014 - 2016, compared to a baseline average for the years, 1890 - 1920.



Carbon dioxide and the temperature of our planet from 800,000 years ago until the present day

